



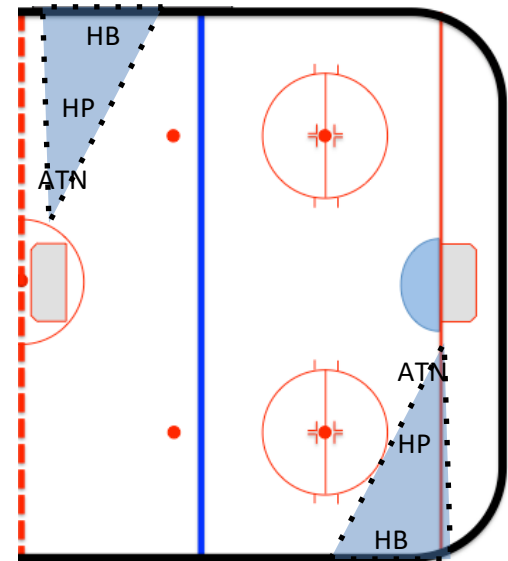
Officiating U9 Half-Ice: You Need Sense of Urgency

Problem: Executives feel that the refereeing at U9 needs to be better developed. U9 is “someone’s NHL” and it is not uncommon for an area to have a volunteer VP-U9 or paid employees at U9 games. You never know who is watching at any level...but this is especially true of U9 1/2-Ice. There are two possible consequences if U9 does not improve. First, only use one official (problem: less games for you and reffing by yourself). Second, paying officials less than U10 hockey (problem: you get paid less).

Solution: The following 5 strategies are the solution:

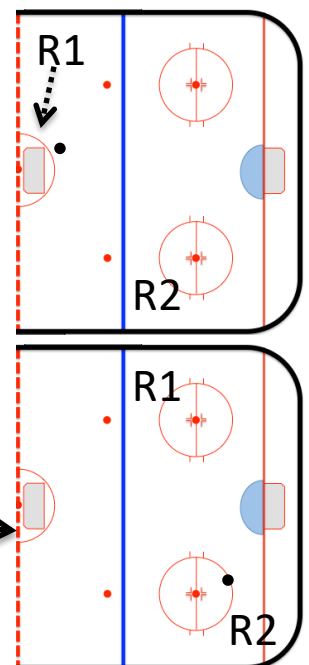
→ Strategy 1: Endzone Positioning for 1/2-Ice.

- Home Base (HB): If the puck is on your side of the ice then you are against the boards
- Half-Piston (HP): Puck is on the other side of the ice then you should be at here.
- At-The-Net (ATN): If the puck is At-The-Net then you should be At-The-Net.



→ Strategy 2: Coming back to the “Blue Line”, just like the full-ice game

- When the puck is in the center-line end of the ice, one official (R2) is at the blue-line and the other is doing endzone positioning (R1).
- When the puck is in the goal-line end, one official (R2) is at the top of the circles (R1) and the other is at the top of the circles (R1).



→Strategy 3: Using proper procedure for “Backing-Off”

- Recall: Review the 1/2-ice rules about backing-off behind ringette line after goalie-cover, goal, puck-out-of-play, or penalty.
- Referee Procedure:
 - Referee closest to puck when play is stopped will ensure the appropriate team has possession of the puck.
 - Referee who is further from puck will ensure the other team backs-off to ringette line.
 - Once team has backed-off to ringette line, play resumes.
 - If the non-puck team does not back-off to ringette line then blow whistle and restart the back-off process.

→Strategy 4: Use proper backing-off procedure for penalties

1. The ref calling the penalty blows the whistle and waits for everyone to stop. Blow your whistle a second time if necessary.
2. The ref not calling the penalty goes to the puck and makes sure the players around the puck stop playing.
3. The ref calling the penalty makes the call and takes the player to the penalty bench.
4. The ref not calling the penalty ensures the penalized team has backed away from the puck, waits for the ref calling the penalty to be in position, then tells the power play team to go.

→Strategy 5: Showing Presence and Urgency

- Take full strides...but do not dig into the ice, if you are going too fast...this makes you look professional but adjusts your speed.
- Straight arms for signals, blow your whistle loud, use your voice.
- Apply all the above strategies: 1-endzone positioning; 2-back official comes to blue line/top-of-circle; 3-make one team back-off after a stoppage; and 4-make play stop for penalties.