



The Half Piston & Cone System for Positioning

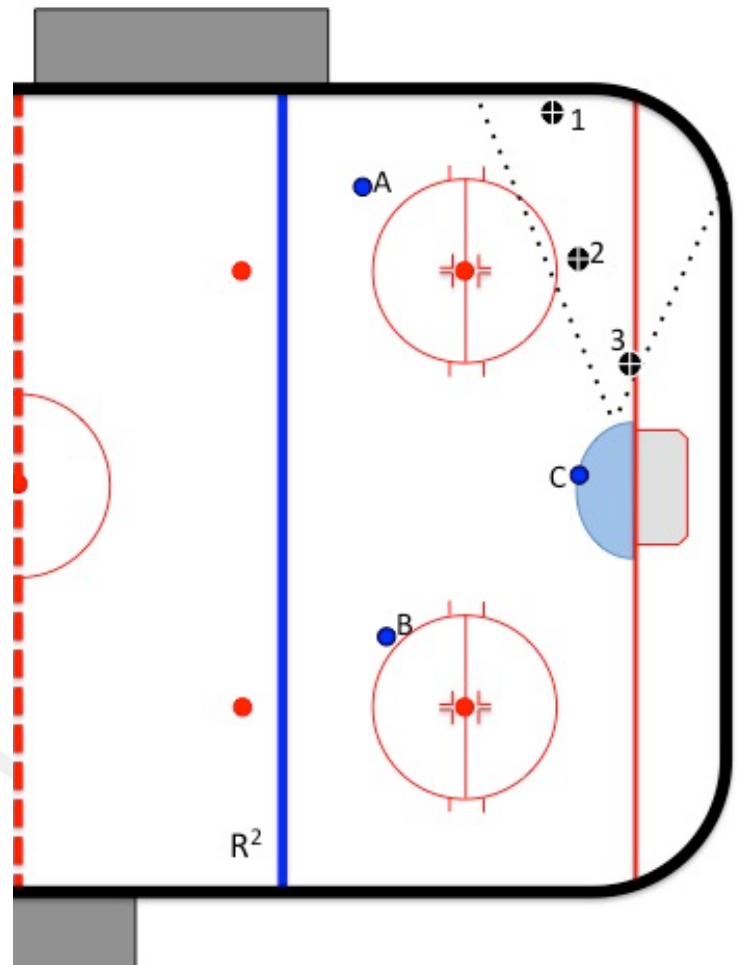
The three parts of piston system are:

- 1) Home base: the official is at black dot #1 (in below diagram) if the puck is on her side of the ice¹.
- 2) Half-Piston: the official is at black dot #2 if the puck is on the far side of the ice².
- 3) At-the-Net: the official is at black dot #3 if the puck is near the goal.

On the diagram to the right, **black dots** represent the position of the referee and **blue dots** represent the position of the puck.

Here is an example of how the referee moves in relation to the puck. When the puck is at blue dot (A), the referee should be at position black dot (1) (Home Base). The puck is then passed to blue dot (B) and the referee moves into position black dot (2) (Half-Piston). The puck is shot on net at blue dot (C) so the referee moves to position black dot (3) (at-the-net).

In the "Cone System"³, the referee may also move below the goal line to get out of the way or improve her ability to see the puck during a goal-mouth scramble. However, positioning below the net should not be the referee's primary positioning and she should return to the Piston System as soon as possible.



¹ Imagine a line drawn from the middle of one net, through the center ice dot to the other net. "Her side of the ice" refers to the puck being on her side of that line.

² "The far side of the ice" refers to the puck being on the imaginary line (described in footnote 1) or on the other side of it.

³ To avoid confusion, the Piston System includes Home base, Half-piston, and At-The-Net. The Cone System includes the Piston System plus below-the-goal line.