



Officiating Novice Half-Ice: You Need Sense of Urgency

Problem: Minor Hockey Associations in various parts of the province have expressed concern that officials are not putting in enough effort during 1/2-Ice games. The main complaint: officials spend most games in one end of the ice and do not move.

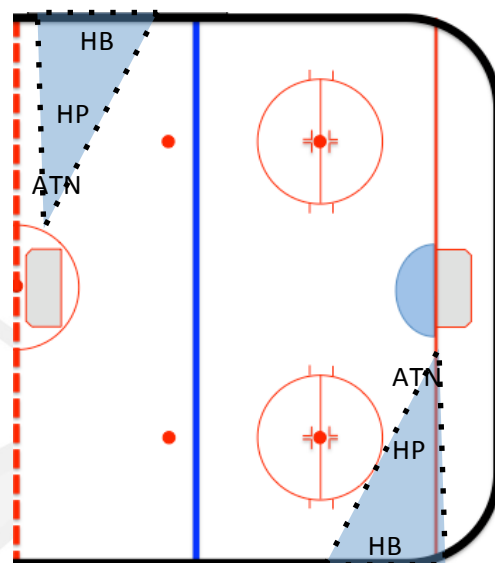
Reminder: This is “someone’s NHL” and it is not uncommon for an area to have a volunteer VP-Novice or paid employees at Novice games. You never know who is watching at any level...but this is especially true of Novice 1/2-Ice.

Potential Consequences: There are two possible consequences being discussed by executives. First, only use one official (problem: less games for you and reffing by yourself). Second, paying officials less than 9 year-old hockey (problem: you get paid less).

Solution: Your goal in the Novice Half-Ice is to work on three skills with urgency: Endzone positioning, coming to the “blue-line”, and creating presence with good signals and management of “backing-off.”

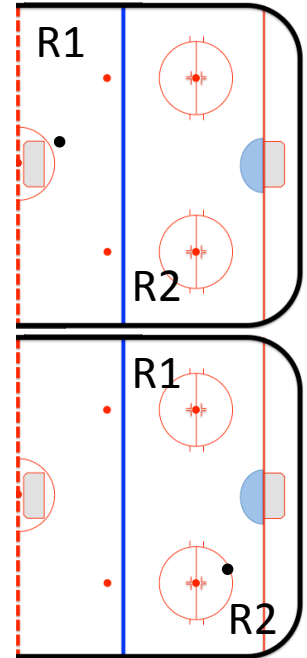
→Strategy I: Endzone Positioning for 1/2-Ice.

- Home Base (HB): If the puck is on your side of the ice then you are against the boards
- Half-Piston (HP): Puck is on the other side of the ice then you should be at here.
- At-The-Net (ATN): If the puck is At-The-Net then you should be At-The-Net.



→Strategy 2: Coming back to the “Blue Line”, just like the full-ice game

- When the puck is in the center-line end of the ice, one official (R2) is at the blue-line and the other is doing endzone positioning (R1).
- When the puck is in the goal-line end, one official is doing endzone positioning (R2) and the other is at the top of the circles (R1).



→Strategy 3: Using proper procedure for “Backing-Off”

- Recall: Review the 1/2-ice rules about backing-off behind ringette line after goalie-cover, goal, puck-out-of-play, or penalty.
- Referee Procedure:
 - Referee closest to puck when play is stopped will ensure the appropriate team has possession of the puck.
 - Referee who is further from puck will ensure the other team backs-off to ringette line.
 - Once team has backed-off to ringette line, play resumes.
 - Note: If the non-puck team does not back-off to ringette line then blow whistle and restart the back-off process.

→Strategy 4: Showing Presence and Urgency

- Take full strides, but do not dig into the ice...this makes you look professional but adjusts your speed.
- Apply straight arms for signals, blow you whistle loud, use your voice.
- Use Correct Endzone Positioning for good presence (Strategy 1).
- Come down to the blue line/top of circles; this creates good presence on the ice (Strategy 2).
- Use proper procedure of “backing-off” (Strategy 3)